

RESOLUTION NO. 881

A RESOLUTION ANNEXING CERTAIN PROPERTIES INTO THE  
CITY OF PRINEVILLE AND REZONING SAID PROPERTIES

IT IS HEREBY RESOLVED by the Prineville City Council as follows:

1. The Council specifically finds that:

(a) Those properties identified in the following descriptions, and as shown on the respective Annexation Maps No. 1 through 6 and attached hereto as Exhibits "A" through "F" respectively, and as specifically described in "Exhibits "A" through "F" of this resolution are contiguous to the City of Prineville.

Annexation Map No. 1 (Exhibit "A"): Tax Lots No.s 200, 203 and 204 of Crook County Assessor's Map 14-16-29CA located in the SW1/4 of Section 29, T14S, R16E, east of Barnes Butte Estates Subdivision, north of the Workman properties, west of Phase III of Northridge Subdivision, and south of the Moriarity property; Said Tax Lots #'s 200 and 204 are also identified as Parcels 1 and 2 of Partitioning Plat No.2000-40, Records of Crook County, Oregon.

Annexation Map No. 2 (Exhibit "B"): Tax Lots No.s 200, 300 and 600 of Crook County Assessor's Map 14-16-31CC located at 960 NW Madras Highway, 950 NW Madras Highway and 940 NW Madras Highway respectively.

Annexation Map No. 3 (Exhibit "C"): Tax Lot No. 1000 of Crook County Assessor's Map 14-15-36AA located at 1883 NW Gardner Road.

Annexation Map No. 4 (Exhibit "D"): Tax Lots No.s 7800 and 7801 of Crook County Assessor's Map 15-16-4B located at 2042 NE 3<sup>rd</sup> Street.

Annexation Map No. 5 (Exhibit "E"): Tax Lots No.s 2000, 2100, and 5300 of Crook County Assessor's Map 14-16-31CD located at 825 NW 6<sup>th</sup> Street, 815 NW 6<sup>th</sup> Street, and 1255 NW Markuson Drive, respectively.

Annexation Map No. 6 (Exhibit "F"): Tax Lots No.s 12100, 12600 and 12700 of Crook County Assessor's Map 15-16-5C located at 972 S. Main Street, and Tax Lots No.s 3700 and 3800 of Assessor's Map 15-16-6DA located at 815 S. Main Street and 839 S. Main Street respectively.


(b) All of the property owners and electors of said properties have either duly petitioned the City for annexation, or have consented to annexation as a condition of receiving City sewer and/or water services.

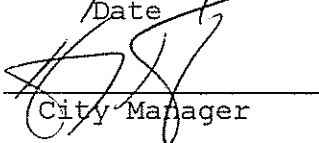
(c) The City Planning Department has duly considered the subject annexation and rezoning issues, and has recommended annexation and certain rezoning of said properties in compliance with the City's Urban Area Comprehensive Plan.

2. The real properties shown and described in "Exhibits "A" through "F"" to this resolution are hereby annexed into the City of Prineville with the boundaries as set forth in said "Exhibits "A" through "F" to this resolution and as shown on the maps set forth in "Exhibits "A" through "F" to this resolution.
  
3. The real properties identified in "Exhibits "A" through "F" to this resolution are hereby rezoned to that City Zone that is found to be compliance with the City's Comprehensive Plan and current City policy concerning the rezoning of annexed residentially designated properties for compatibility with adjoining residentially zoned properties; Said rezoning is shown on the respective Annexation Maps No.s 1 through 6.

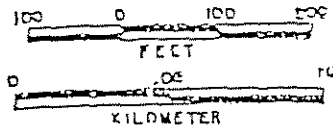
APPROVED BY THE CITY COUNCIL ON THE 13<sup>th</sup> DAY  
OF February, 2001.

APPROVED BY THE MAYOR ON THE 13<sup>th</sup> DAY OF February, 2001.

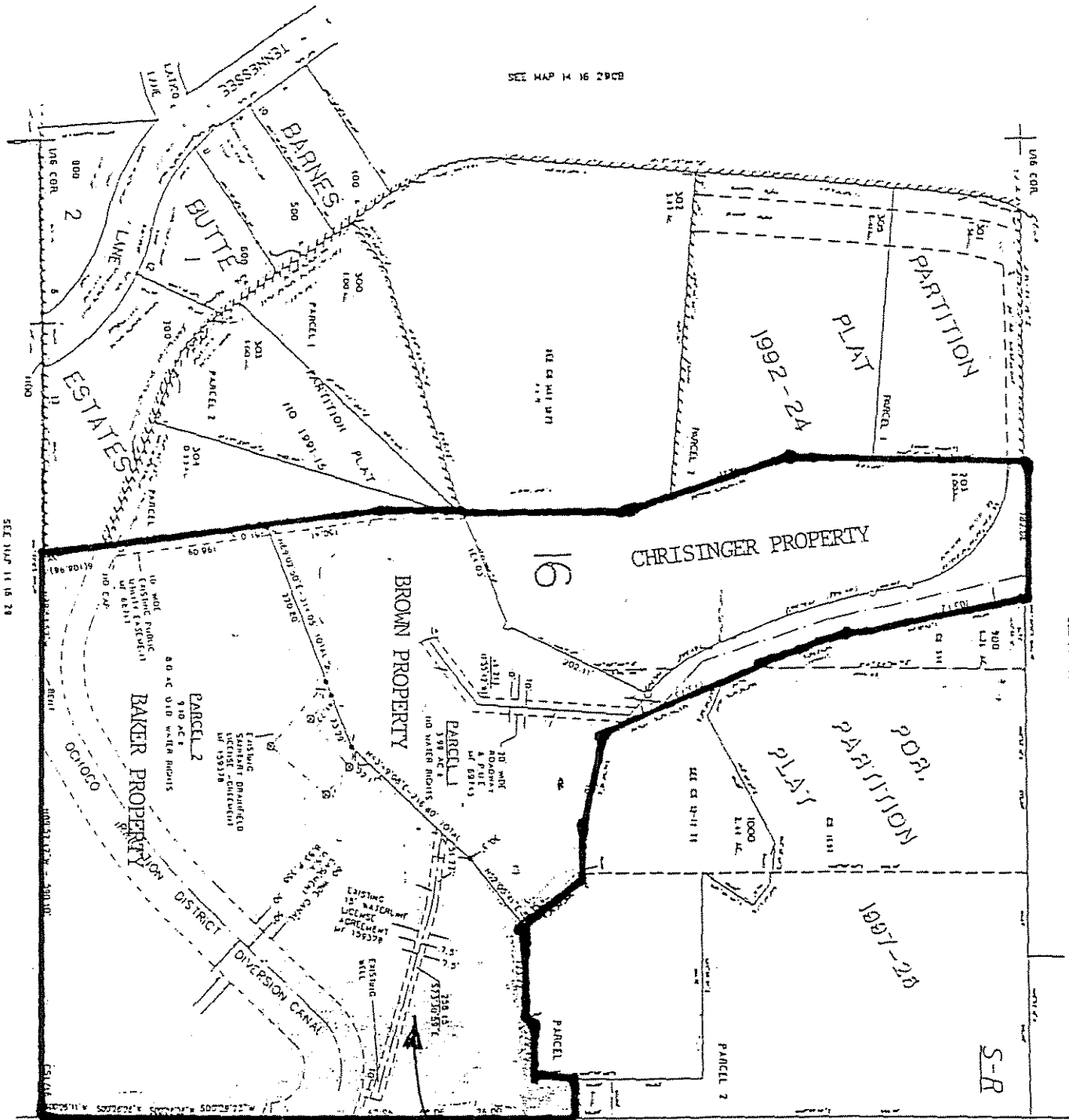
  
Steve Uffelman, Mayor

ATTEST: 2/22/01  
Date  
  
City Manager

SCALE 1:2400



SEE MAP 14 16 29CB



SEE MAP 14 16 29

SEE MAP 14 16 29

THIS MAP WAS PREPARED FOR ASSESSMENT PURPOSE ONLY

CROOK COUNTY

S-R

CANCELLED NO.  
100  
101  
201  
202

ANNEXATION MAP No. 1  
EXHIBIT "A"

14 16 29CA

PRINEVILLE 14 16 31CC

CR COUNTY

WAS PREPARED FOR THE PURPOSE ONLY

SUBJECT PROPERTIES

SEE MAP 14 16 31CB

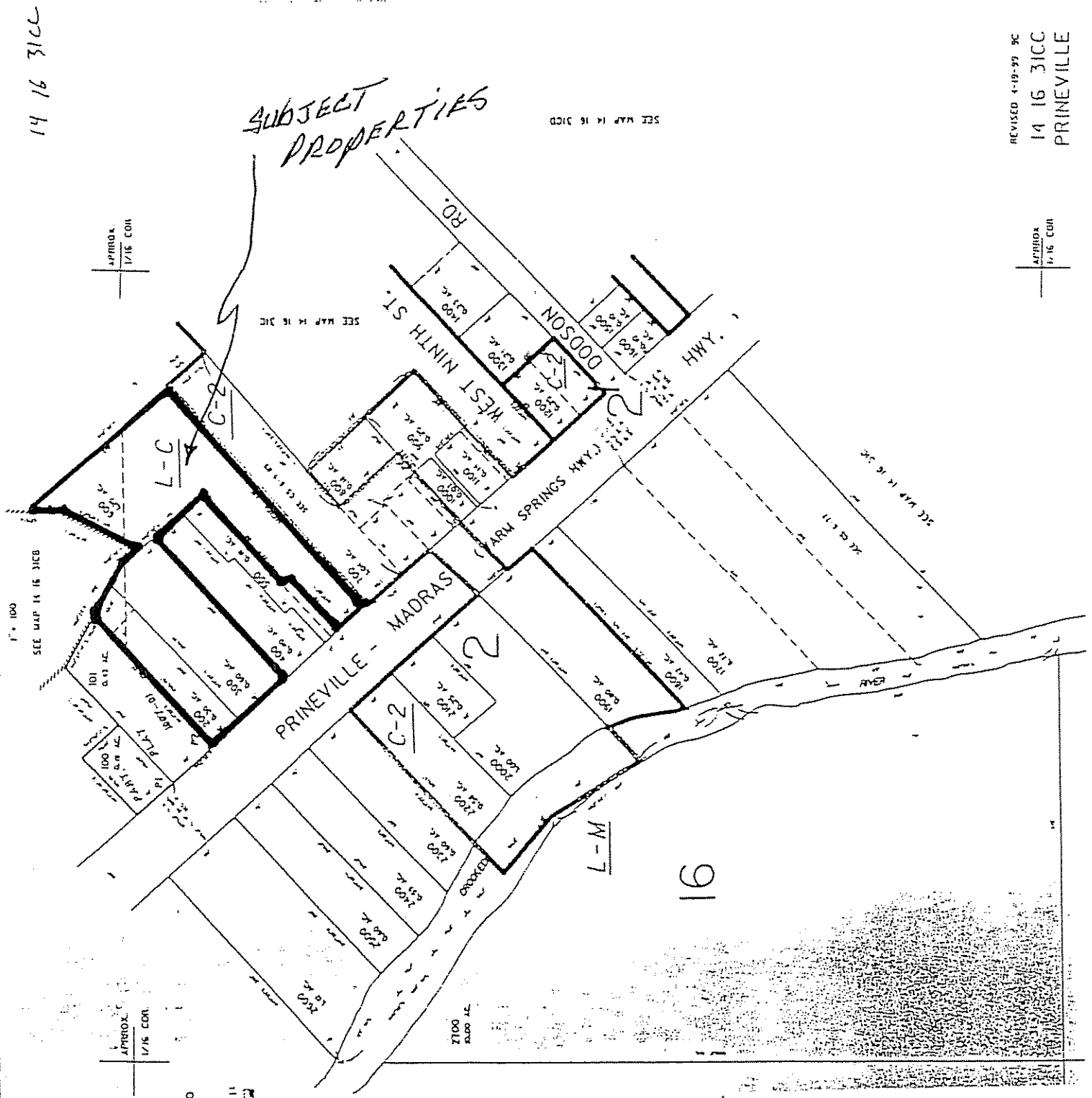
REVISED 4-19-99 9C  
14 16 31CC  
PRINEVILLE

APPROX. 1/16 COR.

APPROX. 1/16 COR.

SEE MAP 14 16 31CB

SEE MAP 14 16 31CB

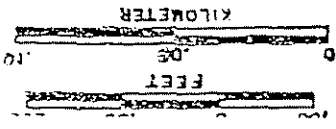
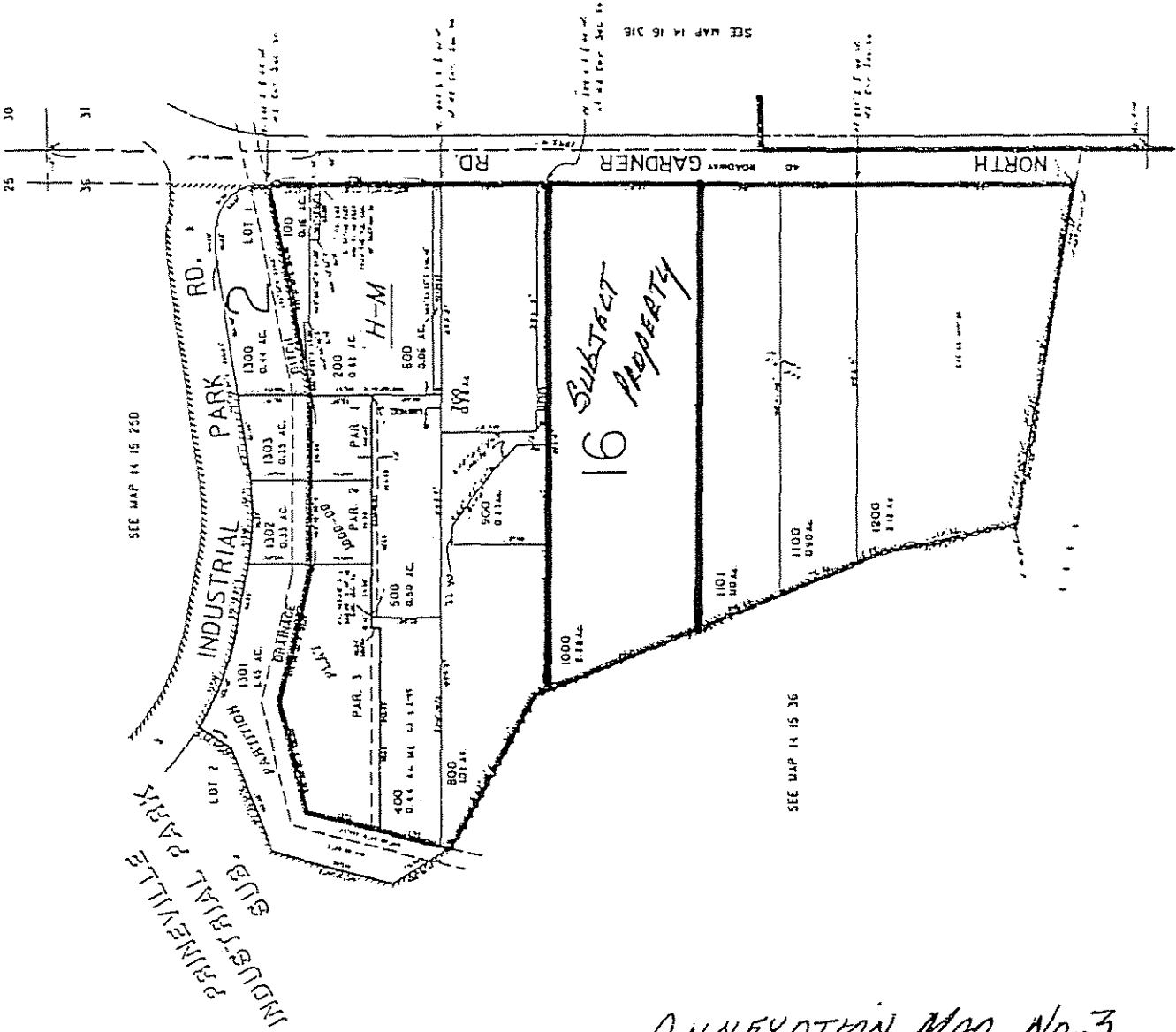


ANNEXATION MAP No. 2  
EXHIBIT "B"

14 15 36AA  
SD 140

40  
801  
901  
1201

1" = 100'



ANNEKATION MAP No. 3  
EXHIBIT "C"

14 15 36AA  
PRINEVILLE  
Revised 02/08/2000 CC

15 16 4B  
PRINEVILLE

5 16 4B

CANCELLED NO.  
RUI  
1300 THRU 1302  
1601  
6501  
6839  
7002  
7003  
7200A1  
7201  
7700

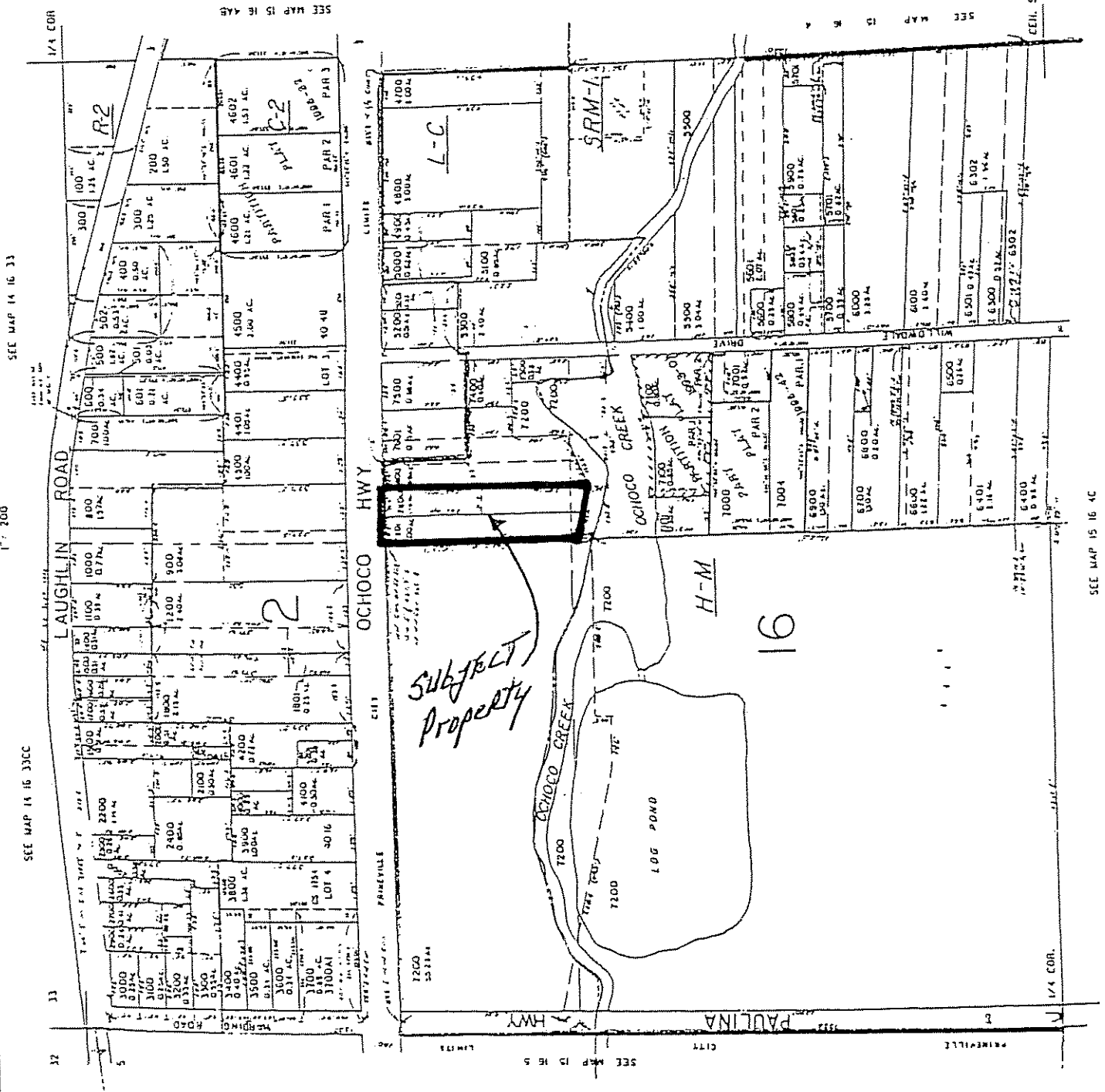
NW 1/4 SEC. 4 T. 15S. R. 16E. W. M.  
CROOK COUNTY

THIS MAP WAS PREPARED FOR  
ASSESSMENT PURPOSE ONLY

1997

1/4

KILOMETER



ANNEXATION MAP No. 4  
EXHIBIT "D"

REVISED 6-9-90. CS  
15 16 4B  
PRINEVILLE

SEE MAP 15 16 4C

SEE MAP 15 16 4A

SEE MAP 14 16 33

SEE MAP 15 16 33C

33

32

5

OCHOCHO HWY

LAUGHLIN ROAD

SUBJECT PROPERTY

OCHOCHO CREEK

LOG POND

H-M

16

L-C

SRM-1

R-2

CELL. SEC.

SEE MAP 15 16 5

PRINEVILLE

PAULINA

SEE MAP 15 16 5

CITY

1/4 COR.

LIMITS

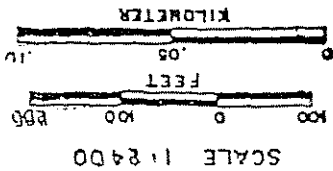
PRINEVILLE

1/4 COR.

SE 1/4 SW 1/4 SEC. 31 T.14S, R.16E. W.M.  
CROOK COUNTY

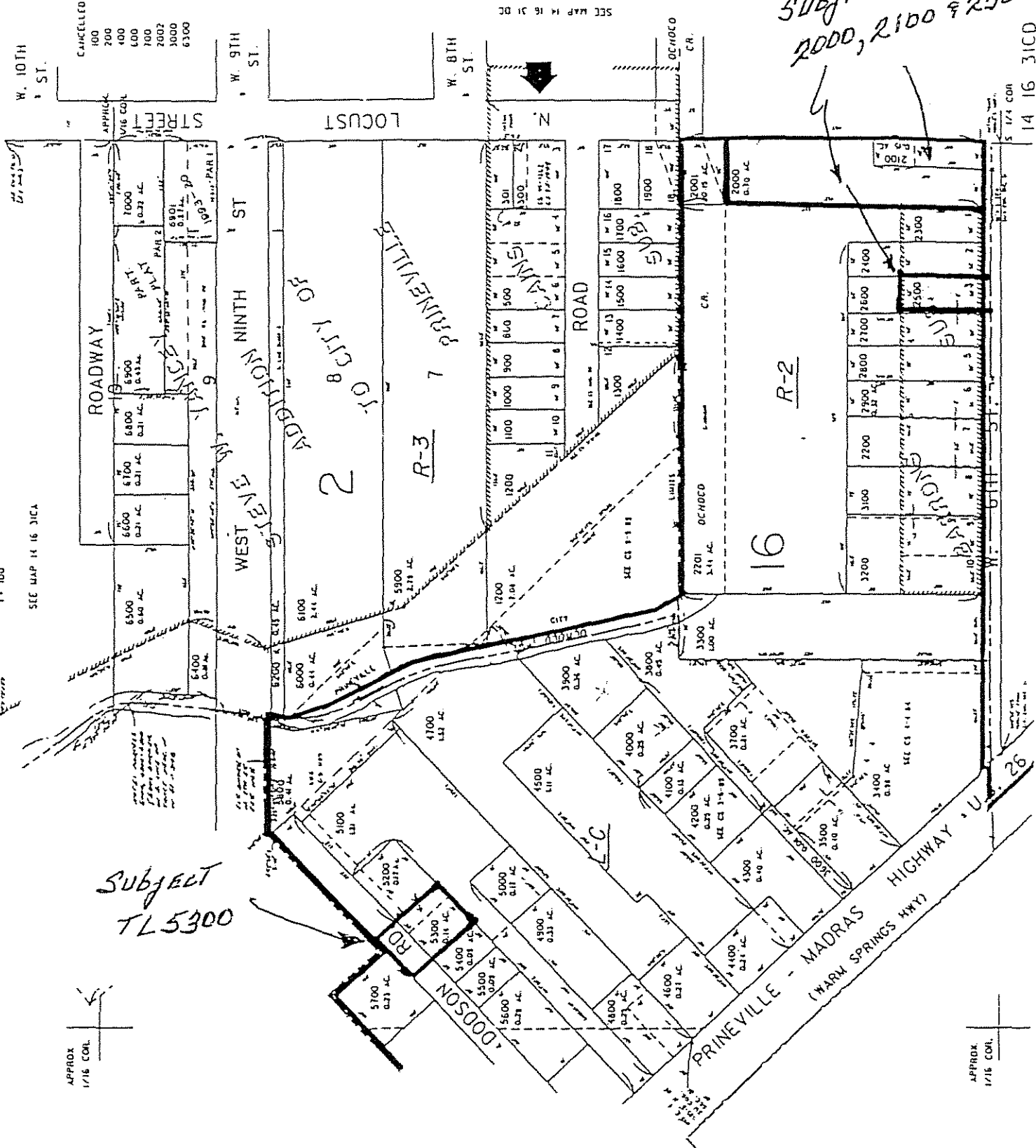
16 31CD  
NEVILLE

THIS MAP WAS PREPARED FOR  
ASSESSMENT PURPOSE ONLY



APPROX  
1/16 COIL

SUBJECT  
TL5300



SUBJECT TL3  
2000, 2100 & 2500

ANNEXATION MAP No. 5  
EXHIBIT "E"

RECEIVED  
JUL 14 1995  
DEPT. OF REVENUE  
STATE OF OREGON

APPROX  
1/16 COIL

14 16 31CD

SEE MAP 15 16 640

1300	1400	1500	1600	1700	1800	1900	2000	2100	2200
274	264	5	235	HAMMAN	777	135	109	107	R-2

SW 5TH STREET

3100	3000	2900	2800	2700	2600	2500	2400	2300	2200
326	325	308	SUBD	138	126	110	GM		

CROOKED RIVER

SR-1.61

3200	3100	3000	2900	2800	2700	2600	2500	2400	2300
16	5	16	5	18	18	18	18	18	18

3801 0.34 AC

3800 0.10 AC

3700 0.85 AC

R-C

8755 Main

Barves

First Assembly of God Church of Vinaville

P.O. Box 645

City

8395 Main

S. E.

FIF

STATE HWY - NO 27

10406 0.17 AC

10401 0.17 AC

10404 0.24 AC

10403 0.28 AC

10405 1.10 AC

10600 0.52 AC

10402 0.39 AC

10400 0.30 AC

10407 0.49 AC

10700 0.29 AC

10900 0.12 AC

10802 0.72 AC

10800 0.53 AC

10801 0.23 AC

11200 0.50 AC

11300 0.90 AC

11500 1.30 AC

11600 0.25 AC

11800 0.81 AC

11700

SEE MAP 15 16 5C

SUPP. MAP

11901 5.70 AC

12000 0.20 AC

LYNN

12100 0.85 AC

12101 1.40 AC

12600 0.89 AC

12804 0.44 AC

12800 1.48 AC

12502

12500 0.44 AC

13000 ROAD

13400 2.70 AC

8801 0.10 AC

12803 1.18 AC

CROOKED RIVER

CANAL

HIGHWAY

ANNEXATION  
MAP NO. 6

EXHIBIT "F"

SEE MAP 15 16 6