

# Phase I Friend-Corral Double 230 kV



# PRINEVILLE TRANSMISSION UPGRADE

# VIEWPOINT LOCATION MAP

- HOUSTON LAKE-FRIEND 115KV LINE
- OCHOCO-FRIEND 230KV LINE
- CORRAL-OUCHOCO 230KV #1
- ① PHOTO VIEWPOINT LOCATION
- SUBSTATION





# Phase I Friend-Corral Double 230 kV



EXISTING CONDITIONS



PROPOSED CONDITIONS

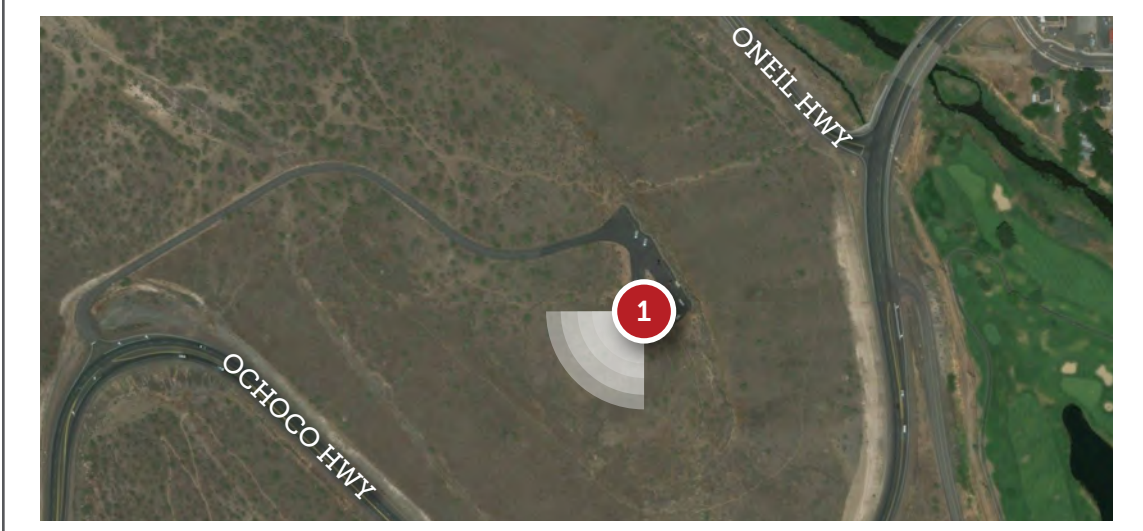
PHOTO SIMULATIONS BY  
**POWER ENGINEERS**

PHOTO SIMULATIONS ARE FOR VISUALIZATION PURPOSES ONLY. FINAL DESIGN IS SUBJECT TO CHANGE PENDING PUBLIC, UTILITY, AND REGULATORY REVIEW.

# PRINEVILLE TRANSMISSION UPGRADE

# PHOTO VIEWPOINT 1

DATE: 03/19/18  
TIME: 9:22 AM  
DIRECTION: SOUTHWEST





# Phase I Friend-Corral Double 230 kV



EXISTING CONDITIONS



PROPOSED CONDITIONS

PHOTO SIMULATIONS BY:  
**POWER ENGINEERS**

PHOTO SIMULATIONS ARE FOR VISUALIZATION PURPOSES ONLY. FINAL DESIGN IS SUBJECT TO CHANGE PENDING PUBLIC, UTILITY, AND REGULATORY REVIEW.

# PRINEVILLE TRANSMISSION UPGRADE

# PHOTO VIEWPOINT 2

DATE: 03/19/18  
TIME: 9:27 AM  
DIRECTION: SOUTHWEST





# Phase I Friend-Corral Double 230 kV



EXISTING CONDITIONS



PROPOSED CONDITIONS

PHOTO SIMULATIONS BY  
**POWER ENGINEERS**

PHOTO SIMULATIONS ARE FOR VISUALIZATION PURPOSES ONLY. FINAL DESIGN IS SUBJECT TO CHANGE PENDING PUBLIC, UTILITY, AND REGULATORY REVIEW.

# PRINEVILLE

TRANSMISSION UPGRADE

# PHOTO VIEWPOINT 3

DATE: 03/19/18

TIME: 9:30 AM

DIRECTION: NORTHSOUTH





# Phase I Friend-Corral Double 230 kV



EXISTING CONDITIONS



PROPOSED CONDITIONS

PHOTO SIMULATIONS BY  
**POWER ENGINEERS**

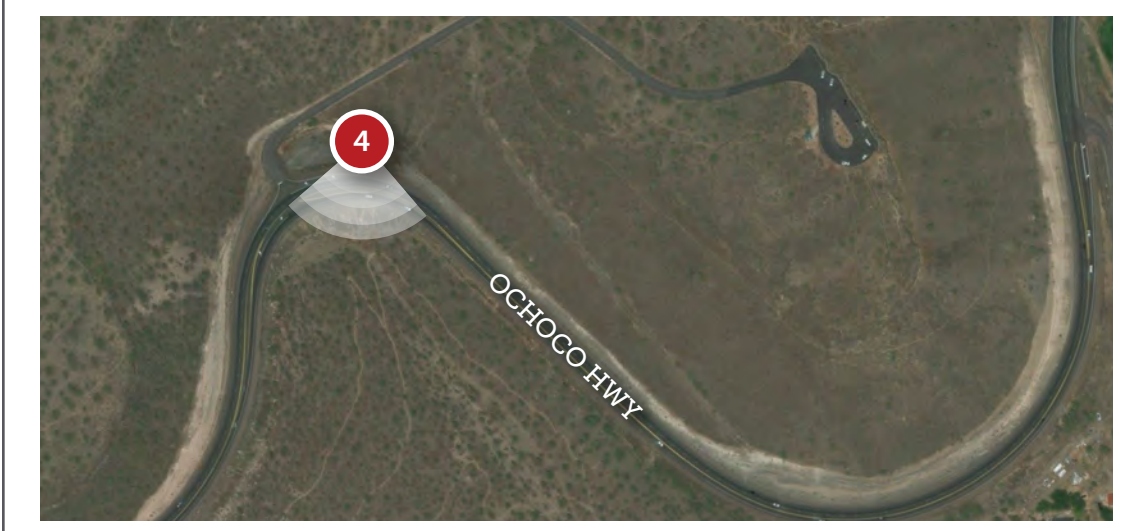
PHOTO SIMULATIONS ARE FOR VISUALIZATION PURPOSES ONLY. FINAL DESIGN IS SUBJECT TO CHANGE PENDING PUBLIC, UTILITY, AND REGULATORY REVIEW.

# PRINEVILLE

TRANSMISSION UPGRADE

# PHOTO VIEWPOINT 4

DATE: 03/19/18  
TIME: 9:37 AM  
DIRECTION: SOUTH





# Phase I Friend-Corral Double 230 kV



EXISTING CONDITIONS



PROPOSED CONDITIONS

PHOTO SIMULATIONS BY  
**POWER ENGINEERS**

PHOTO SIMULATIONS ARE FOR VISUALIZATION PURPOSES ONLY. FINAL DESIGN IS SUBJECT TO CHANGE PENDING PUBLIC, UTILITY, AND REGULATORY REVIEW.

# PRINEVILLE

TRANSMISSION UPGRADE

# PHOTO VIEWPOINT 5

DATE: 03/19/18  
TIME: 9:48 AM  
DIRECTION: SOUTHWEST





# Phase I Friend-Corral Double 230 kV



EXISTING CONDITIONS



PROPOSED CONDITIONS

PHOTO SIMULATIONS BY:  
**POWER ENGINEERS**

PHOTO SIMULATIONS ARE FOR VISUALIZATION PURPOSES ONLY. FINAL DESIGN IS SUBJECT TO CHANGE PENDING PUBLIC, UTILITY, AND REGULATORY REVIEW.

# PRINEVILLE

TRANSMISSION UPGRADE

# PHOTO VIEWPOINT 6

DATE: 03/19/18  
TIME: 9:55 AM  
DIRECTION: SOUTHWEST





# Phase I Friend-Corral Double 230 kV



EXISTING CONDITIONS



PROPOSED CONDITIONS

PHOTO SIMULATIONS BY  
**POWER ENGINEERS**

PHOTO SIMULATIONS ARE FOR VISUALIZATION PURPOSES ONLY. FINAL DESIGN IS SUBJECT TO CHANGE PENDING PUBLIC, UTILITY, AND REGULATORY REVIEW

# PRINEVILLE

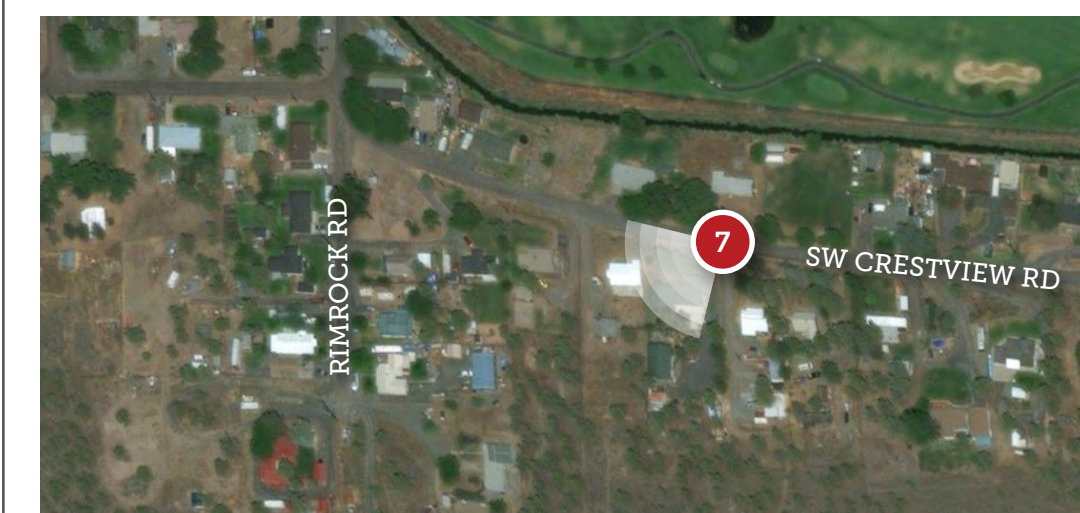
TRANSMISSION UPGRADE

# PHOTO VIEWPOINT 7

DATE: 03/19/18

TIME: 9:57 AM

DIRECTION: SOUTHWEST





# Phase I Friend-Corral Double 230 kV



EXISTING CONDITIONS



PROPOSED CONDITIONS

PHOTO SIMULATIONS BY:  
**POWER ENGINEERS**

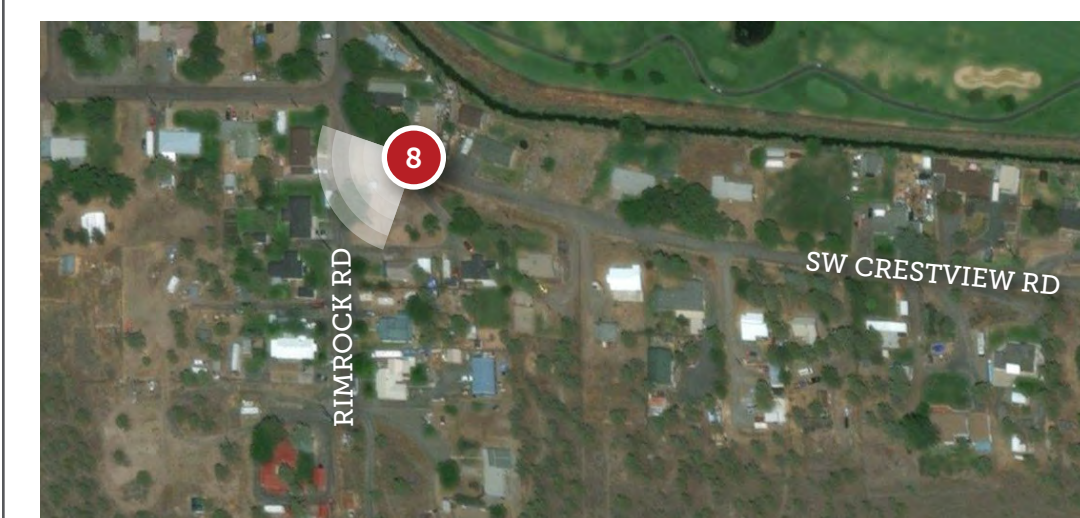
PHOTO SIMULATIONS ARE FOR VISUALIZATION PURPOSES ONLY. FINAL DESIGN IS SUBJECT TO CHANGE PENDING PUBLIC, UTILITY, AND REGULATORY REVIEW.

# PRINEVILLE

TRANSMISSION UPGRADE

# PHOTO VIEWPOINT 8

DATE: 03/19/18  
TIME: 09:59 MM  
DIRECTION: SOUTHWEST





# Phase I Friend-Corral Double 230 kV



EXISTING CONDITIONS



PROPOSED CONDITIONS

PHOTO SIMULATIONS BY:  
**POWER ENGINEERS**

PHOTO SIMULATIONS ARE FOR VISUALIZATION PURPOSES ONLY. FINAL DESIGN IS SUBJECT TO CHANGE PENDING PUBLIC, UTILITY, AND REGULATORY REVIEW.

# PRINEVILLE TRANSMISSION UPGRADE

# PHOTO VIEWPOINT 9

DATE: 03/19/18  
TIME: 10:14 AM  
DIRECTION: SOUTHWEST





# Phase I Friend-Corral Double 230 kV



EXISTING CONDITIONS



PROPOSED CONDITIONS

PHOTO SIMULATIONS BY:  
**POWER ENGINEERS**

PHOTO SIMULATIONS ARE FOR VISUALIZATION PURPOSES ONLY. FINAL DESIGN IS SUBJECT TO CHANGE PENDING PUBLIC, UTILITY, AND REGULATORY REVIEW.

# PRINEVILLE TRANSMISSION UPGRADE

# PHOTO VIEWPOINT **10**

DATE: 03/19/18  
TIME: 10:15 AM  
DIRECTION: SOUTHWEST





# Phase I Friend-Corral Double 230 kV



EXISTING CONDITIONS



PROPOSED CONDITIONS

PHOTO SIMULATIONS BY:  
**POWER ENGINEERS**

PHOTO SIMULATIONS ARE FOR VISUALIZATION PURPOSES ONLY. FINAL DESIGN IS SUBJECT TO CHANGE PENDING PUBLIC, UTILITY, AND REGULATORY REVIEW.

# PRINEVILLE TRANSMISSION UPGRADE

# PHOTO VIEWPOINT 11

DATE: 03/19/18  
TIME: 10:32 AM  
DIRECTION: SOUTHWEST





# Phase I Friend-Corral Double 230 kV



EXISTING CONDITIONS



PROPOSED CONDITIONS

PHOTO SIMULATIONS BY:  
**POWER ENGINEERS**

PHOTO SIMULATIONS ARE FOR VISUALIZATION PURPOSES ONLY. FINAL DESIGN IS SUBJECT TO CHANGE PENDING PUBLIC, UTILITY, AND REGULATORY REVIEW.

# PRINEVILLE

TRANSMISSION UPGRADE

# PHOTO VIEWPOINT 12

DATE: 03/19/18  
TIME: 10:36 AM  
DIRECTION: SOUTHWEST





# Phase I Friend-Corral Double 230 kV



EXISTING CONDITIONS



PROPOSED CONDITIONS

PHOTO SIMULATIONS BY:  
**POWER ENGINEERS**

PHOTO SIMULATIONS ARE FOR VISUALIZATION PURPOSES ONLY. FINAL DESIGN IS SUBJECT TO CHANGE PENDING PUBLIC, UTILITY, AND REGULATORY REVIEW.

# PRINEVILLE TRANSMISSION UPGRADE

# PHOTO VIEWPOINT **13**

DATE: 03/19/18  
TIME: 11:16 AM  
DIRECTION: SOUTHWEST

